

### NE-HCHO(NE4-HCHO)

NE-HCHO is a formaldehyde gas sensor, and is applicable for detecting and measuring formaldehyde generated from woody construction material or remained concentration after sterilization. Since it can detect even 0.5ppm of HCHO, it is applicable for various equipments.

• Characteristics & Ratings

Items	Characteristics & Ratings
Detected gas conc.	HCHO 0 - 50ppm
Output current	80±20nA / ppm
Repeatability	Less than ±2%
Response time	T90 : less than 30sec.
Zero offset drift	Less than 3ppm (-20 · +50°C)
Temperature	-20 · +50°C
Humidity	15 · 90%RH

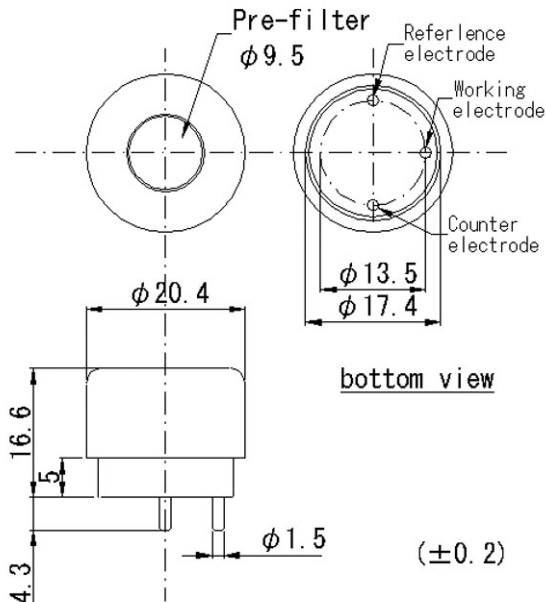


Fig. Shape and dimension

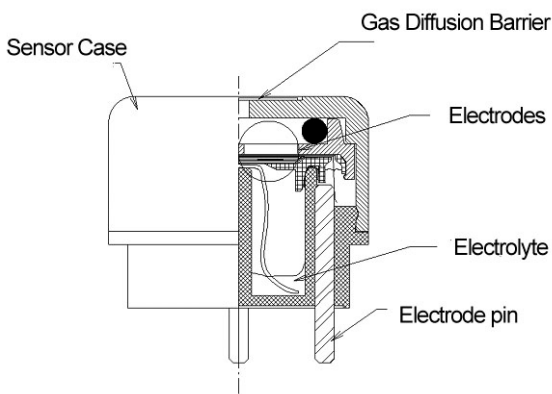


Fig. Structure of NE-HCHO

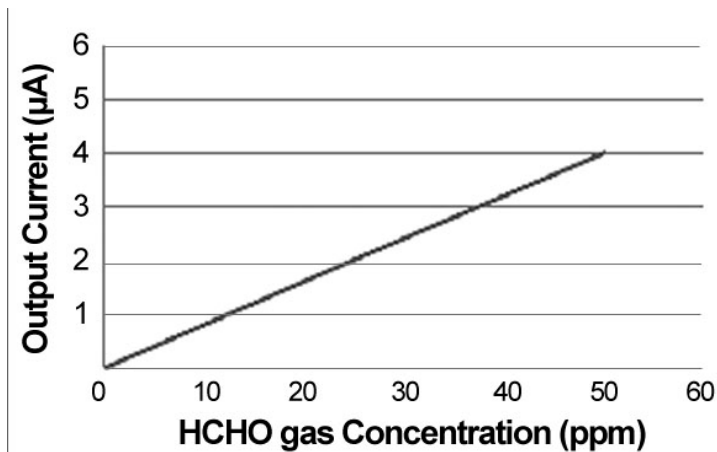
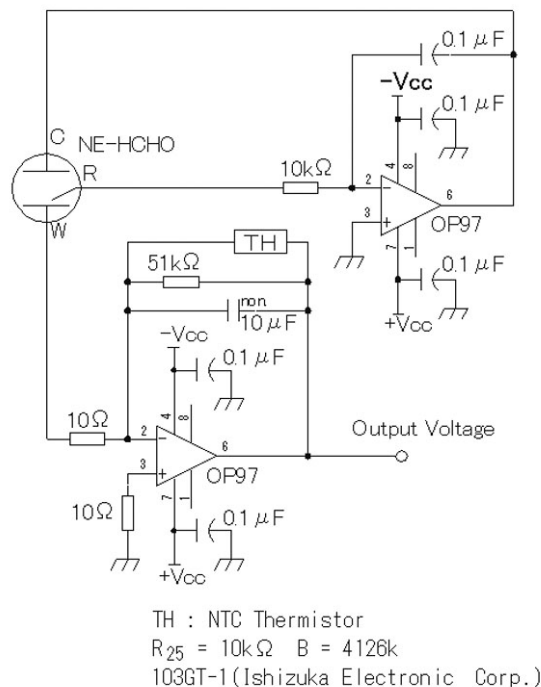


Fig. Gas sensitivity characteristics



Recommended circuit diagram

( Body color : Black )